



Legend

- Existing Water
- Existing Stream
- Proposed Parking Area
- Proposed ADA Walkway
- Proposed Loop Trail
- Proposed Hiking Trail
- Proposed Boardwalk
- Proposed Solar Panel Add-On
- Proposed Destination Playground
- Proposed Water Splash
- Proposed Dog Park
- Proposed Tree Planting
- Proposed Meadow Planting
- Proposed Stormwater BMP

Key

- 1 Multi Purpose Athletic Field
- 2 Skate Park
- 3 Destination Playground & Picnic Area
- 4 Splash Pad Play Area
- 5 Sitting Garden/Memorial Area
- 6 Multi-Use Hardcourt Area
- 7 60-Foot Baseball/Softball Field
- 8 Secondary Playground
- 9 90-Foot Baseball Field
- 10 Amphitheater
- 11 Park Loop Trail - 1.5 Miles
- 12 Dog Park
- 13 Hiking Trail
- 14 BMP (Typ)
- 15 Restroom (Typ)
- # Parking Total (Typ.)

Draft Plan: German Masontown Park



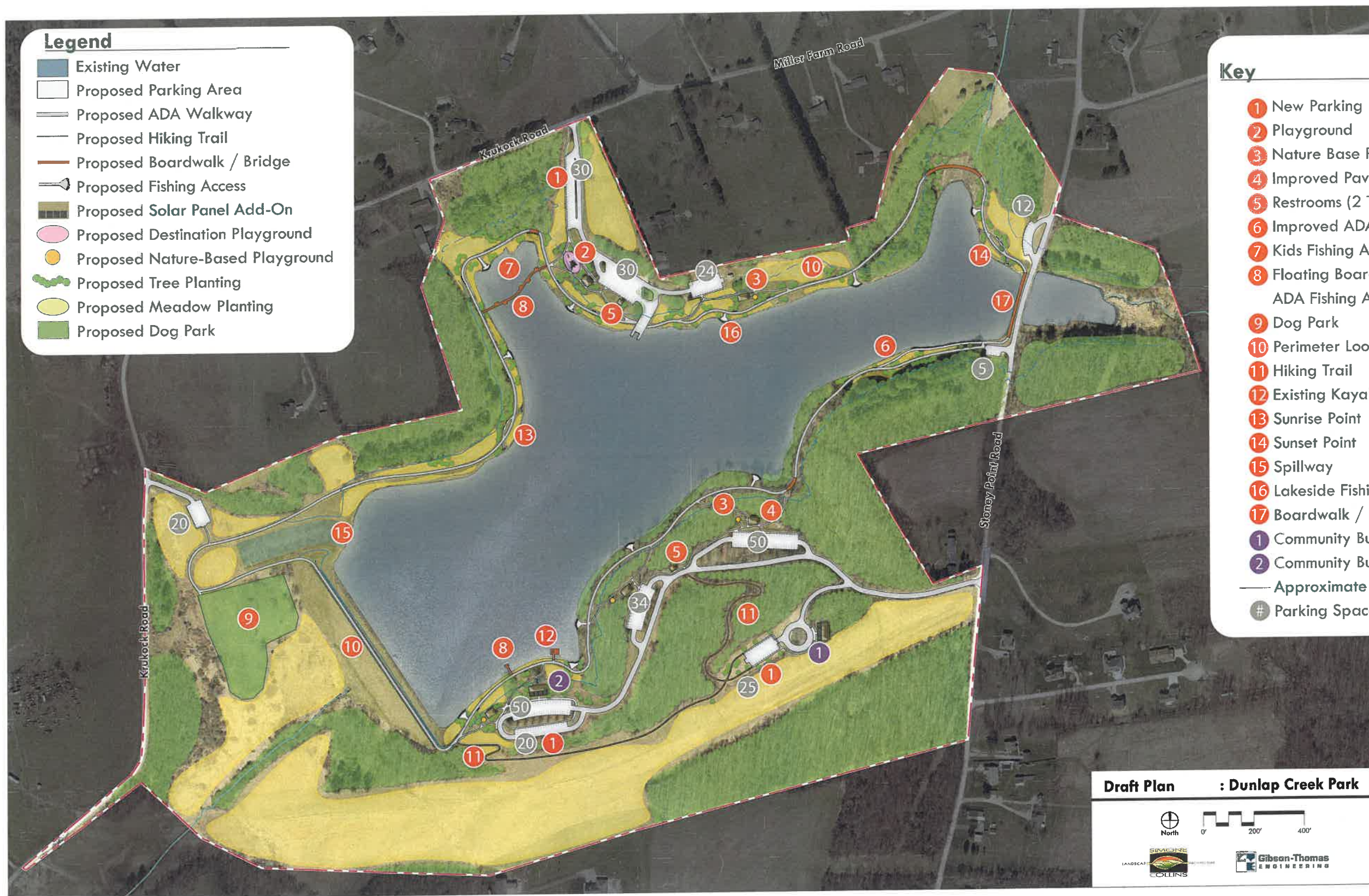








German Masontown Park Estimated Costs Summary		
	Park Loop Trail	\$ 633,200
	Construction Cost	\$ 518,990
	Mobilization (3%)	\$ 15,570
	Construction Surveying (2%)	\$ 10,380
	Erosion and Sedimentation Control (2%)	\$ 10,380
	Construction Contingency (10%)	\$ 51,899
	Stormwater Management (5%)	\$ 25,950
	Hiking Trail	\$ 40,000
	Construction Cost	\$ 32,750
	Mobilization (3%)	\$ 983
	Construction Surveying (2%)	\$ 655
	Erosion and Sedimentation Control (2%)	\$ 655
	Construction Contingency (10%)	\$ 3,275
	Stormwater Management (5%)	\$ 1,638
	90 Foot Baseball Field/ Playground	\$ 308,900
	Construction Cost	\$ 253,210
	Mobilization (3%)	\$ 7,596
	Construction Surveying (2%)	\$ 5,064
	Erosion and Sedimentation Control (2%)	\$ 5,064
	Construction Contingency (10%)	\$ 25,321
	Stormwater Management (5%)	\$ 12,660
	60 Foot Field/ Restroom	\$ 213,000
	Construction Cost	\$ 174,597
	Mobilization (3%)	\$ 5,238
	Construction Surveying (2%)	\$ 3,492
	Erosion and Sedimentation Control (2%)	\$ 3,492
	Construction Contingency (10%)	\$ 17,460
	Stormwater Management (5%)	\$ 8,730
	Ballfield Parking	\$ 534,500
	Construction Cost	\$ 438,093
	Mobilization (3%)	\$ 13,143
	Construction Surveying (2%)	\$ 8,762
	Erosion and Sedimentation Control (2%)	\$ 8,762
	Construction Contingency (10%)	\$ 43,809
	Stormwater Management (5%)	\$ 21,905
	Entrance Parking	\$ 325,900
	Construction Cost	\$ 267,135
	Mobilization (3%)	\$ 8,014
	Construction Surveying (2%)	\$ 5,343
	Erosion and Sedimentation Control (2%)	\$ 5,343
	Construction Contingency (10%)	\$ 26,714
	Stormwater Management (5%)	\$ 13,357
	Playground/ Skate Park/ Splash Pad/ Hardcourt	\$ 760,300
	Construction Cost	\$ 623,188
	Mobilization (3%)	\$ 18,696
	Construction Surveying (2%)	\$ 12,464
	Erosion and Sedimentation Control (2%)	\$ 12,464
	Construction Contingency (10%)	\$ 62,319
	Stormwater Management (5%)	\$ 31,159
	Multipurpose Field/ Restroom	\$ 138,700
	Construction Cost	\$ 113,678
	Mobilization (3%)	\$ 3,410
	Construction Surveying (2%)	\$ 2,274
	Erosion and Sedimentation Control (2%)	\$ 2,274
	Construction Contingency (10%)	\$ 11,368
	Stormwater Management (5%)	\$ 5,684
	Sitting Garden/ Memorial Area	\$ 79,100
	Construction Cost	\$ 64,838
	Mobilization (3%)	\$ 1,945
	Construction Surveying (2%)	\$ 1,297
	Erosion and Sedimentation Control (2%)	\$ 1,297
	Construction Contingency (10%)	\$ 6,484
	Stormwater Management (5%)	\$ 3,242
	Restroom/ Concessions/ Ampitheatre/ Road and Parking	\$ 836,200
	Construction Cost	\$ 685,374
	Mobilization (3%)	\$ 20,561
	Construction Surveying (2%)	\$ 13,707
	Erosion and Sedimentation Control (2%)	\$ 13,707
	Construction Contingency (10%)	\$ 68,537
	Stormwater Management (5%)	\$ 34,269
	Dog Park/ Parking/ Road	\$ 548,600
	Construction Cost	\$ 449,655
	Mobilization (3%)	\$ 13,490
	Construction Surveying (2%)	\$ 8,993
	Erosion and Sedimentation Control (2%)	\$ 8,993
	Construction Contingency (10%)	\$ 44,965
	Stormwater Management (5%)	\$ 22,483
	Total Park Improvement Construction Cost	\$ 4,418,400
	Design and Engineering Fees (15%)	\$ 662,760
	Total Park Improvement Cost	\$ 5,081,160













Dunlap Creek Park Estimated Costs Summary		
Perimeter Trail// ADA Fishing Trail// Fishing Access/ Sunrise Point/ Sunset Point	\$	932,500
Construction Cost	\$	764,361
Mobilization (3%)	\$	22,931
Construction Surveying (2%)	\$	15,287
Erosion and Sedimentation Control (2%)	\$	15,287
Construction Contingency (10%)	\$	76,436
Stormwater Management (5%)	\$	38,218
North Shore Parking/ Playgrounds/ Pavilions/ Restroom	\$	919,000
Construction Cost	\$	753,306
Mobilization (3%)	\$	22,599
Construction Surveying (2%)	\$	15,066
Erosion and Sedimentation Control (2%)	\$	15,066
Construction Contingency (10%)	\$	75,331
Stormwater Management (5%)	\$	37,665
East Shore Additional Parking	\$	177,200
Construction Cost	\$	145,220
Mobilization (3%)	\$	4,357
Construction Surveying (2%)	\$	2,904
Erosion and Sedimentation Control (2%)	\$	2,904
Construction Contingency (10%)	\$	14,522
Stormwater Management (5%)	\$	7,261
South Shore Upper Community Center/ Parking/ Hiking Trail	\$	739,100
Construction Cost	\$	605,808
Mobilization (3%)	\$	18,174
Construction Surveying (2%)	\$	12,116
Erosion and Sedimentation Control (2%)	\$	12,116
Construction Contingency (10%)	\$	60,581
Stormwater Management (5%)	\$	30,290
South Shore Playgrounds/ Trails/ Parking/ Pavilions/ Restroom	\$	840,100
Construction Cost	\$	688,634
Mobilization (3%)	\$	20,659
Construction Surveying (2%)	\$	13,773
Erosion and Sedimentation Control (2%)	\$	13,773
Construction Contingency (10%)	\$	68,863
Stormwater Management (5%)	\$	34,432
South Shore Parking/ Playground/ Pavilion/ Boardwalk/ Hiking Trail	\$	486,100
Construction Cost	\$	398,469
Mobilization (3%)	\$	11,954
Construction Surveying (2%)	\$	7,969
Erosion and Sedimentation Control (2%)	\$	7,969
Construction Contingency (10%)	\$	39,847
Stormwater Management (5%)	\$	19,923
West Dog Park Area Parking/ Road	\$	194,600
Construction Cost	\$	159,549
Mobilization (3%)	\$	4,786
Construction Surveying (2%)	\$	3,191
Erosion and Sedimentation Control (2%)	\$	3,191
Construction Contingency (10%)	\$	15,955
Stormwater Management (5%)	\$	7,977
Floating Dock/ Kids Fishing Area	\$	331,800
Construction Cost	\$	271,950
Mobilization (3%)	\$	8,159
Construction Surveying (2%)	\$	5,439
Erosion and Sedimentation Control (2%)	\$	5,439
Construction Contingency (10%)	\$	27,195
Stormwater Management (5%)	\$	13,598
Total Park Improvement Construction Cost	\$	4,620,400
Design and Engineering Fees (15%)	\$	693,060
Total Park Improvement Cost	\$	5,313,460